



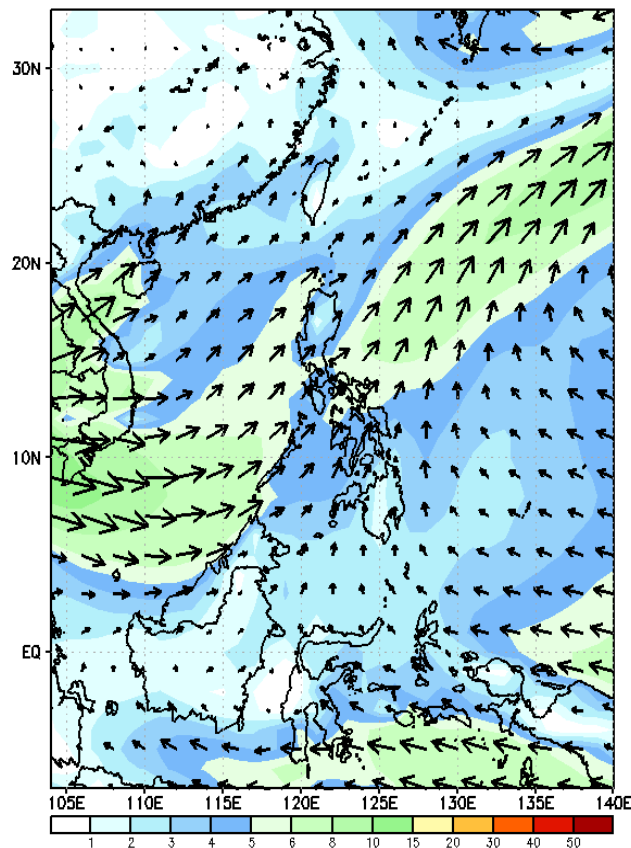
Week 1 & Week 2 Forecast for the Philippines using GEFS Model



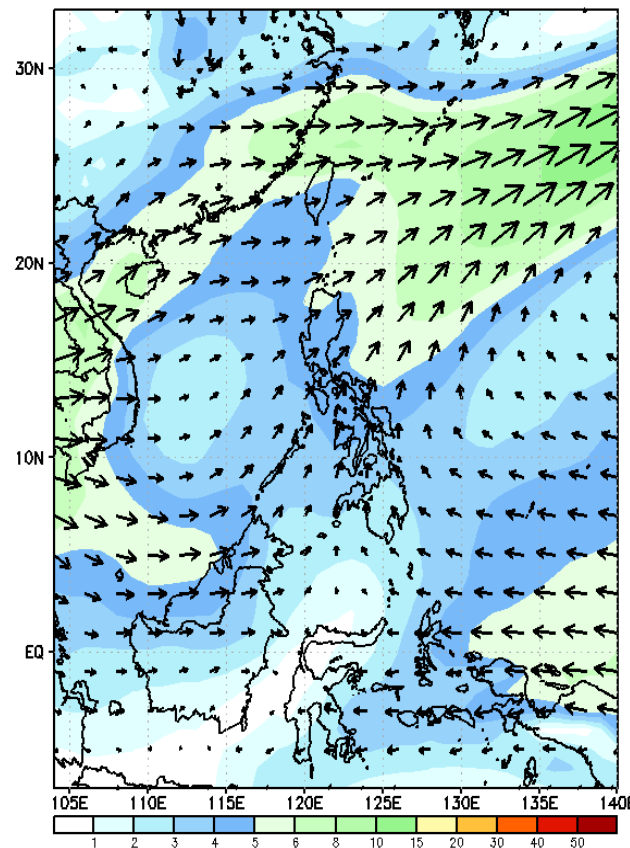
GEFS Week-1 Wind Forecasts:

Week 1: Jun 05-11, 2024

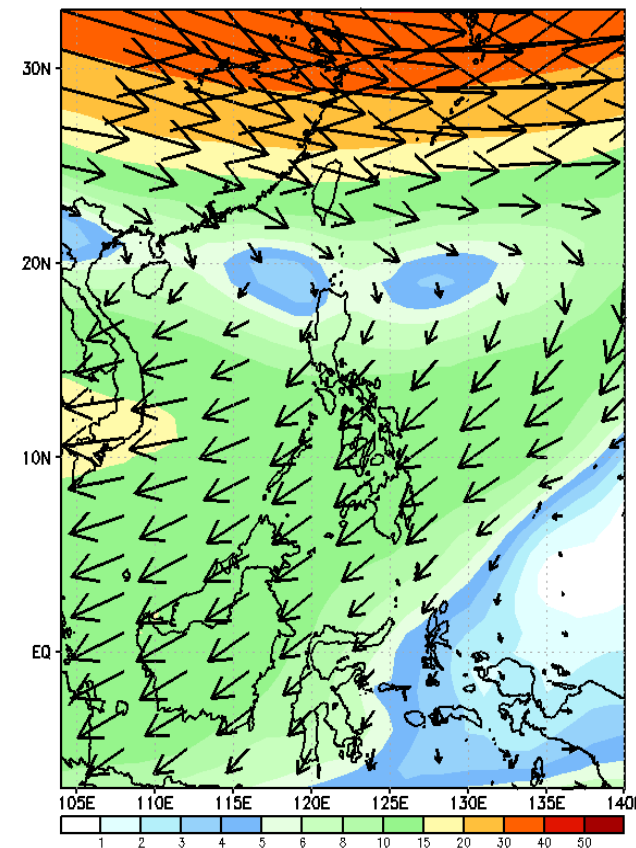
GEFS Week-1 850-hPa Wind Total
Valid: 20240605 - 20240611



GEFS Week-1 700-hPa Wind Total
Valid: 20240605 - 20240611

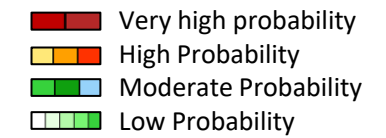


GEFS Week-1 200-hPa Wind Total
Valid: 20240605 - 20240611



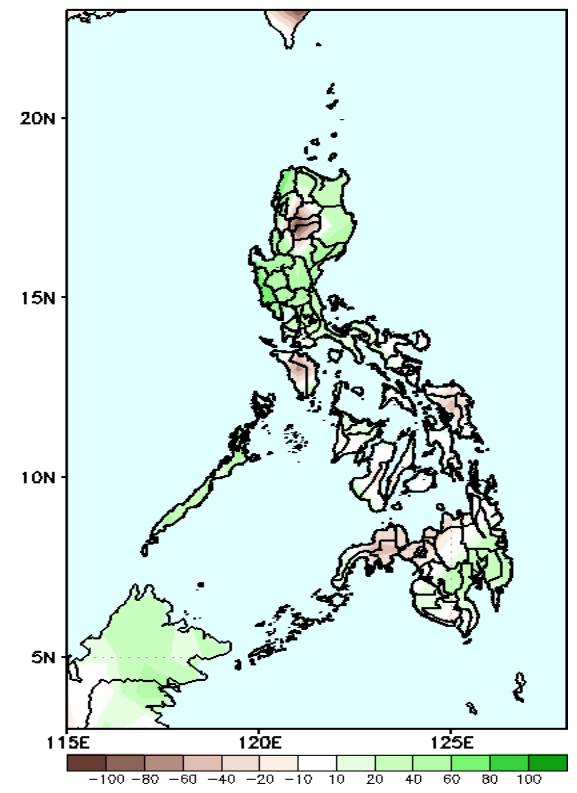
Southwesterly windflow affecting Western Luzon. Easterlies affecting the rest of the country .

Precipitation Anomaly and Exceedance Probability > 25/50 mm

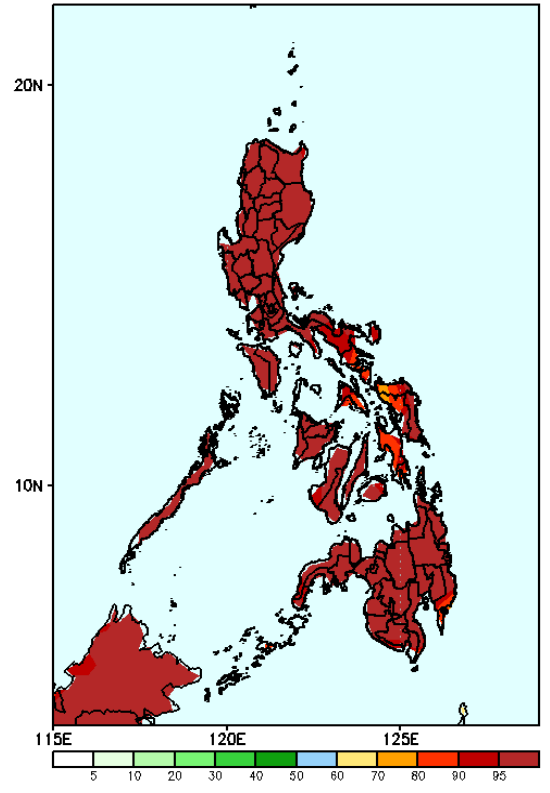


Week 1: Jun 05-11, 2024

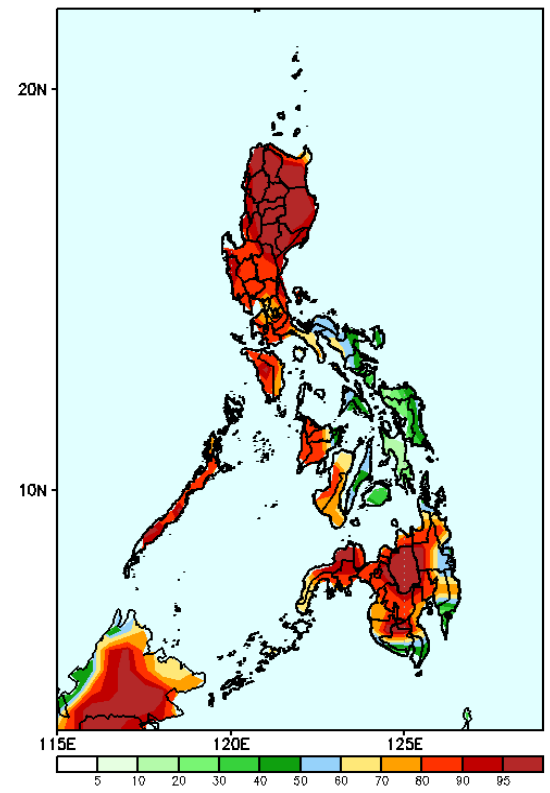
GEFS Week-1 Precip Anomaly
Valid: 20240605 - 20240611



GEFS Week-1 Exceedance Prob. > 25mm
Valid: 20240605 - 20240611



GEFS Week-1 Exceedance Prob. > 50mm
Valid: 20240605 - 20240611



Rainfall increase of 20-60mm is expected in most parts of Luzon and Davao region while a deficit of 20-80mm is expected in some parts of CAR, Mindoro Provinces, most of Visayas and the rest of Mindanao.

Probability to Exceed 25mm

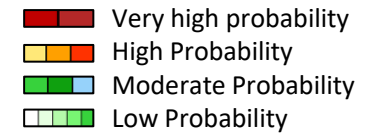
- High to very high over most parts of the country.

Probability to Exceed 50mm

- High to very high over most parts of Luzon, Western Visayas and most of Mindanao;
- Moderate to high over Bicol Region;
- Low to moderate over the rest of Visayas.

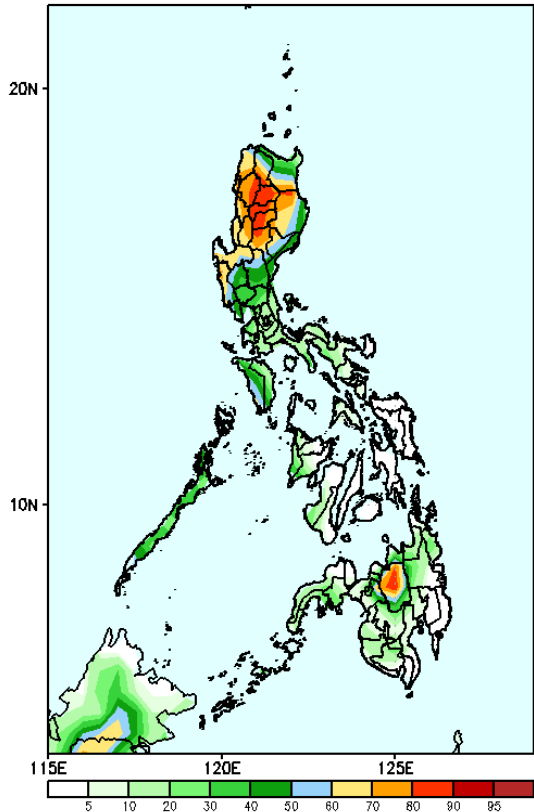


Exceedance Probability > 100/150/200 mm

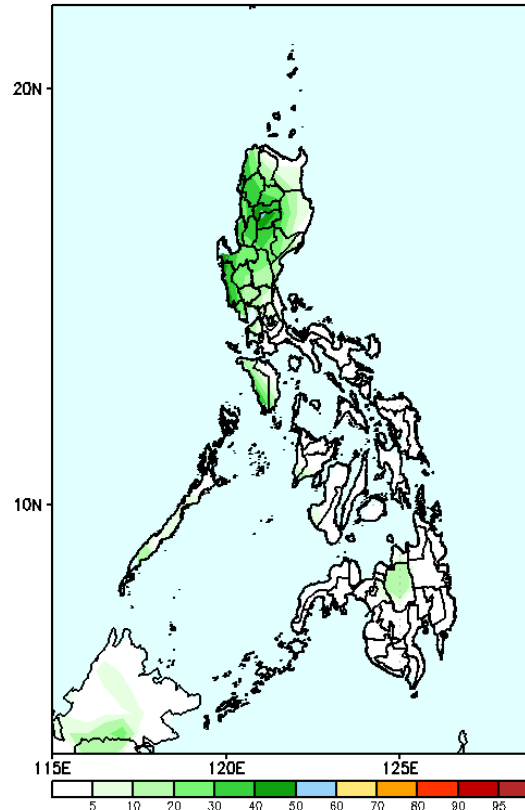


Week 1: Jun 05-11, 2024

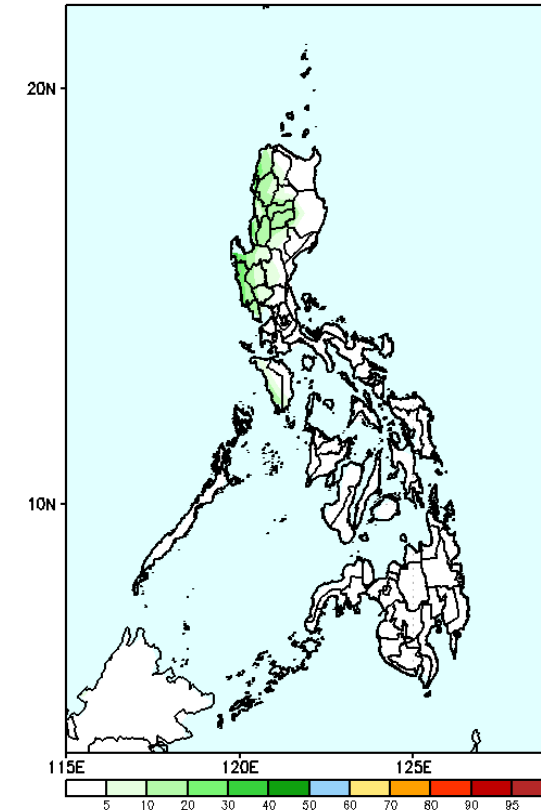
GEFS Week-1 Exceedance Prob. > 100mm
Valid: 20240605 - 20240611



GEFS Week-1 Exceedance Prob. > 150mm
Valid: 20240605 - 20240611



GEFS Week-1 Exceedance Prob. > 200mm
Valid: 20240605 - 20240611



Probability to Exceed 100mm

- Moderate to high over Northern Luzon, Zambales, Occidental Mindoro and Bukidnon;
- Low to moderate over the rest of the country.

Probability to Exceed 150mm

- Low to moderate over some parts of CAR and Nueva Vizcaya
- Low over the rest of the country.

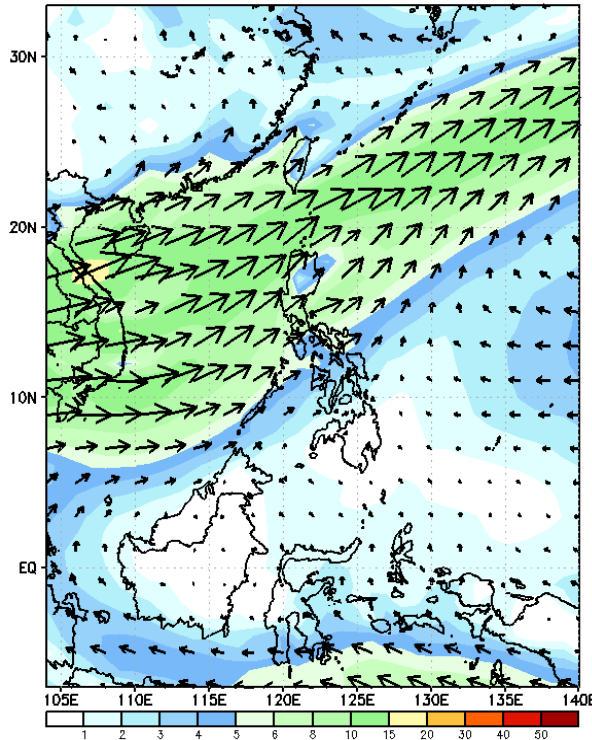
Probability to Exceed 200mm

- Low across the country.

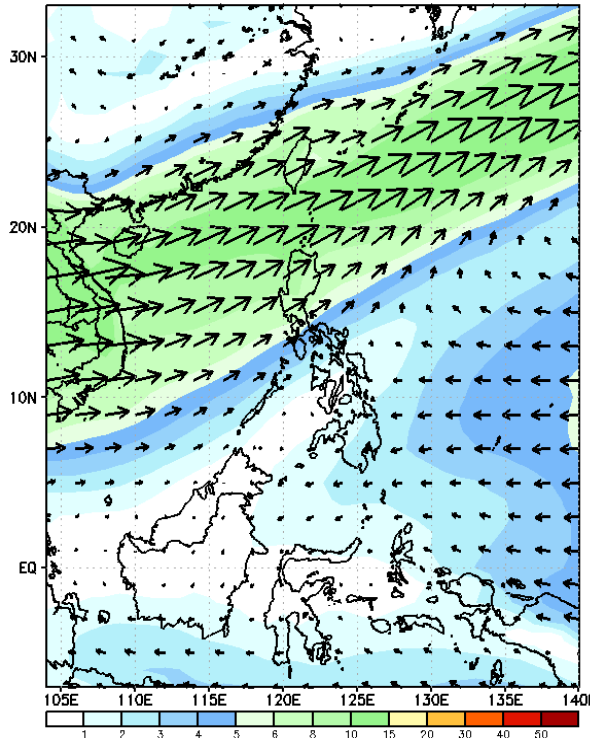
GEFS Week-2 Wind Forecasts:

Week 2: Jun 12-18, 2024

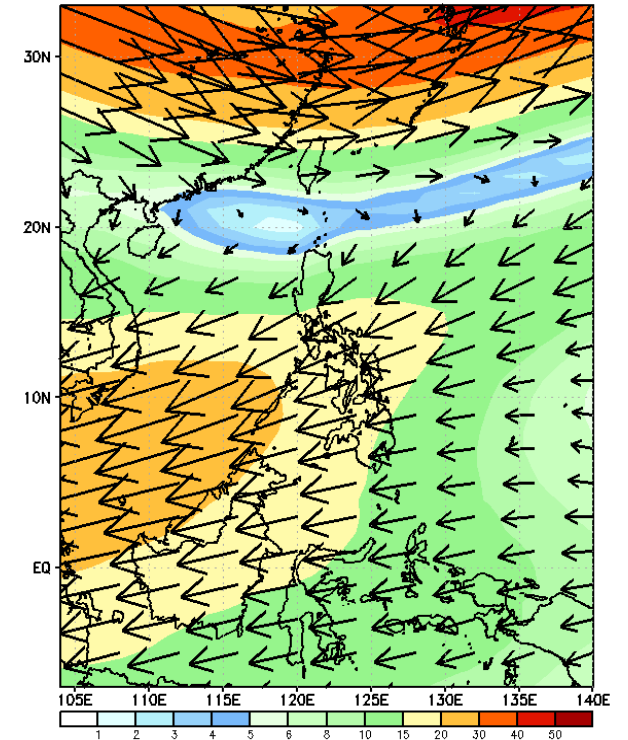
GEFS Week-2 850-hPa Wind Total
Valid: 20240612 - 20240618



GEFS Week-2 700-hPa Wind Total
Valid: 20240612 - 20240618

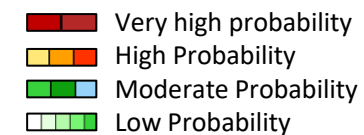


GEFS Week-2 200-hPa Wind Total
Valid: 20240612 - 20240618



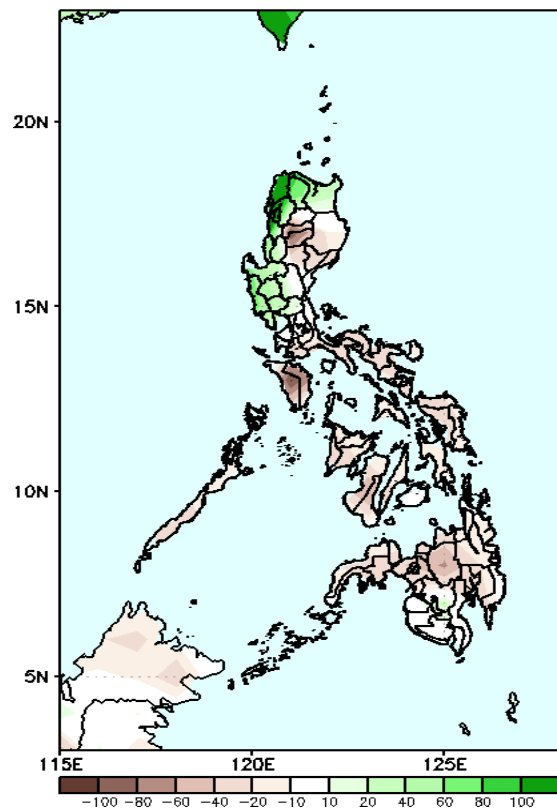
Southwesterly windflow affecting Western Luzon and portions of Western Visayas. Easterlies affecting the rest of the country .

Precipitation Anomaly and Exceedance Probability > 25/50 mm



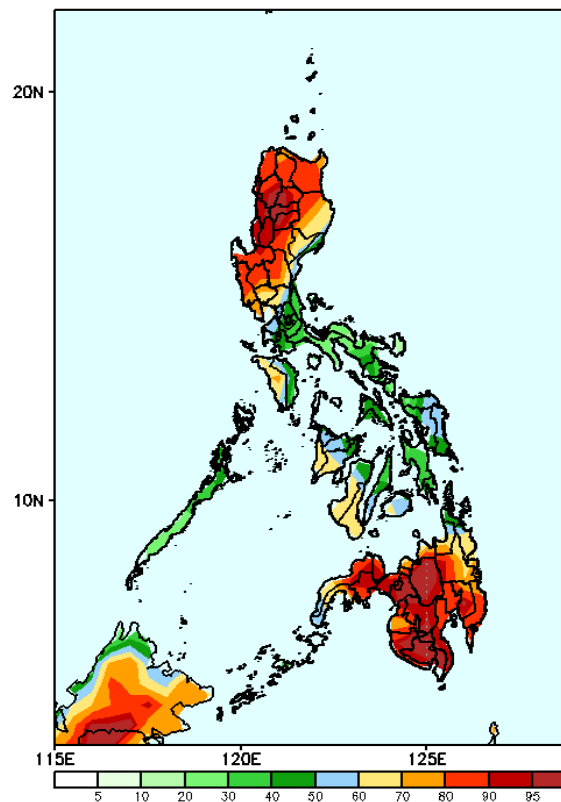
Week 2: Jun 12-18, 2024

GEFS Week-2 Precip Anomaly
Valid: 20240612 - 20240618



Increase of rainfall of more than 100mm is expected in Ilocos Provinces; 20-40mm in Apayao, Cagayan, the rest of Ilocos region, Benguet, Kalinga and Central Luzon while the rest of the country will likely have a 20-80mm rainfall deficit.

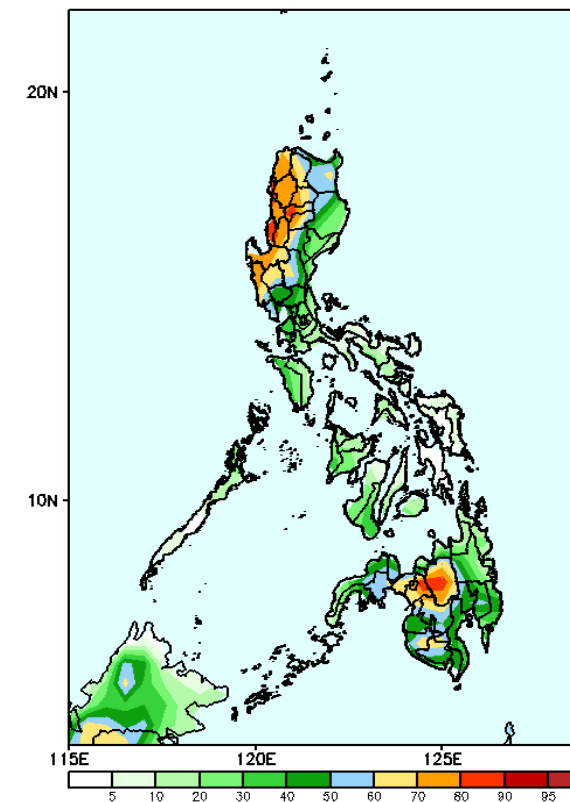
GEFS Week-2 Exceedance Prob. > 25mm
Valid: 20240612 - 20240618



Probability to Exceed 25mm

- High to very high over most parts of Luzon and Mindanao;
- Moderate to high over the rest of the country.

GEFS Week-2 Exceedance Prob. > 50mm
Valid: 20240612 - 20240618



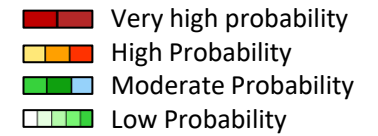
Probability to Exceed 50mm

- Moderate to high over Northern and Central Luzon and most of Mindanao;
- Low to moderate over the rest of the country.

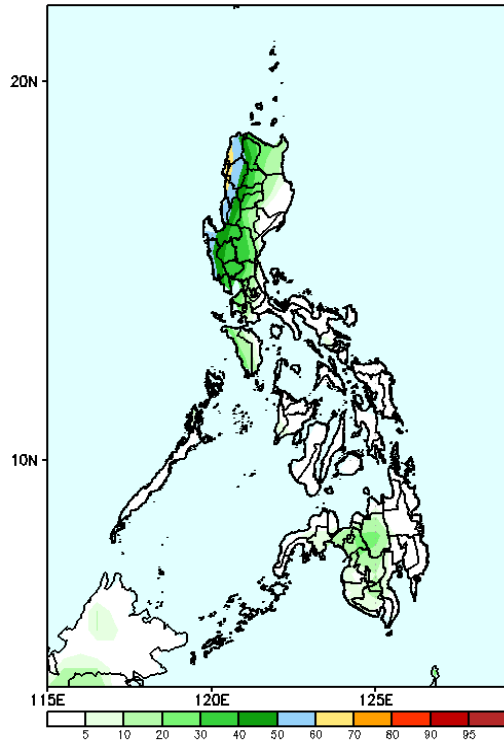


Exceedance Probability > 100/150/200 mm

Week 2: Jun 12-18, 2024



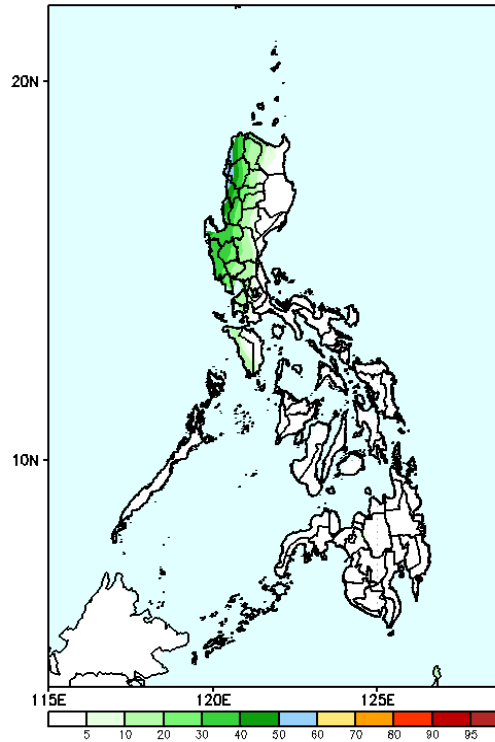
GEFS Week-2 Exceedance Prob. > 100mm
Valid: 20240612 - 20240618



Probability to Exceed 100mm

- Moderate to high over the western portion of Northern Luzon and Zambales;
- Low to moderate over the rest of the country.

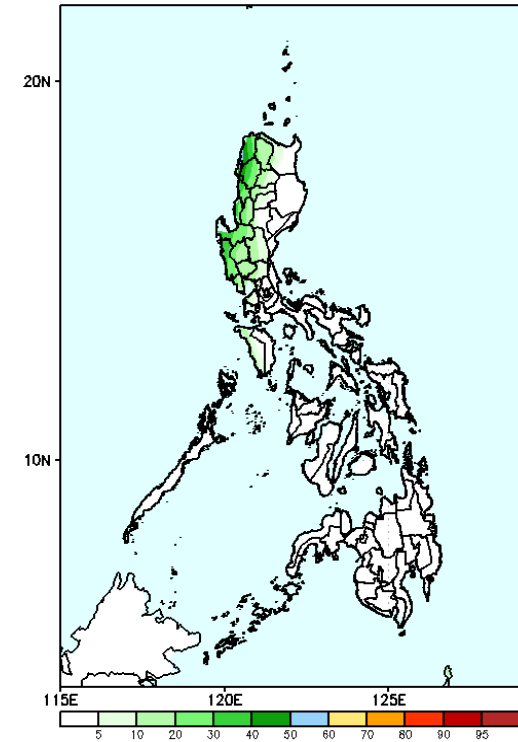
GEFS Week-2 Exceedance Prob. > 150mm
Valid: 20240612 - 20240618



Probability to Exceed 150mm

- Low to moderate over the western portion of Luzon;
- Low over the rest of the country.

GEFS Week-2 Exceedance Prob. > 200mm
Valid: 20240612 - 20240618



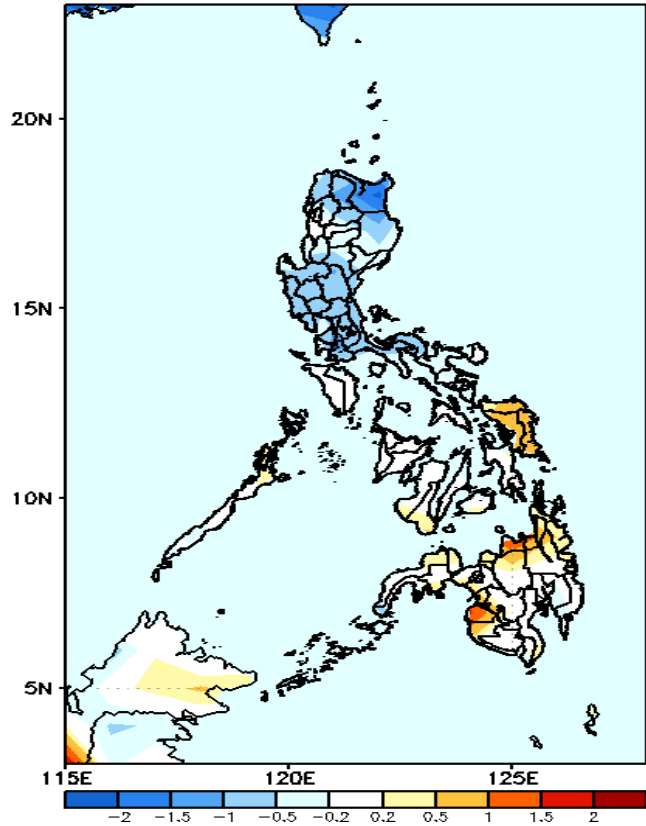
Probability to Exceed 200mm

- Low to moderate over Ilocos Region and Zambales;
- Low over the rest of the country

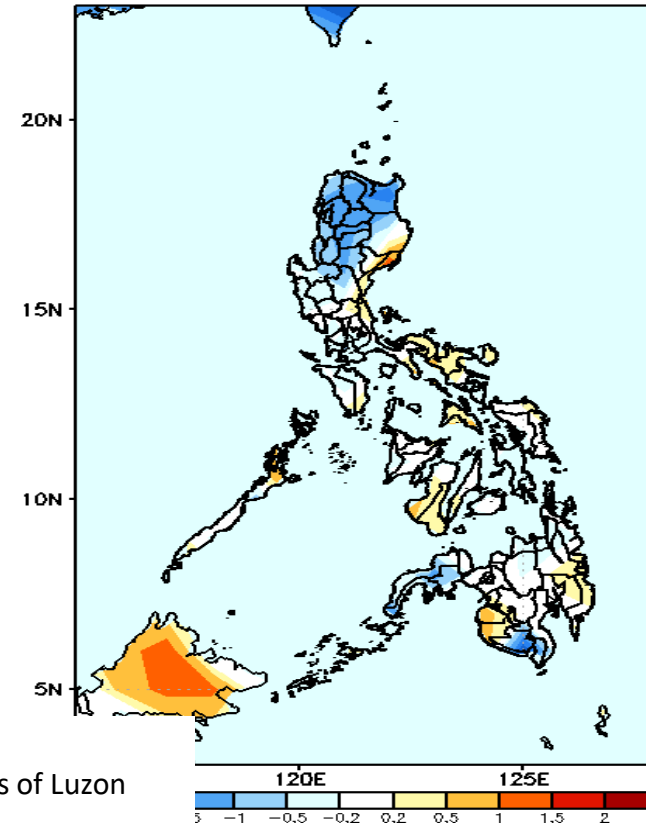


GEFS Week-1 & 2 Forecasts: T2m Anomaly

GEFS Week-1 T2m Anomaly
Valid: 20240605 - 20240611



GEFS Week-2 T2m Anomaly
Valid: 20240612 - 20240618



Probability to Exceed 25mm

- High to very high over most parts of Luzon and Mindanao;
- Moderate to high over the rest of the country.

024

Increase of rainfall of more than 100mm is expected in Ilocos Provinces; 20-40mm in Apayao, Cagayan, the rest of Ilocos region, Benguet, Kalinga and Central Luzon while the rest of the country will likely have a 20-80mm rainfall deficit.

re will likely
pt in Samar
n Mindanao

where slightly warmer to warmer than average temperature is expected.

2m temperature Week 2: J

Cooler than average surface air temperature experienced in most parts of Northern Cotabato and Zamboanga Peninsula which will likely have slightly warmer to warmer than average surface air temperature.

Probability to Exceed 50mm

- Moderate to high over Northern and Central Luzon and most of Mindanao;
- Low to moderate over the rest of the country.

